

InteDW

**GREEN ARCHITECTURAL PARTITION DOOR AND WINDOW**

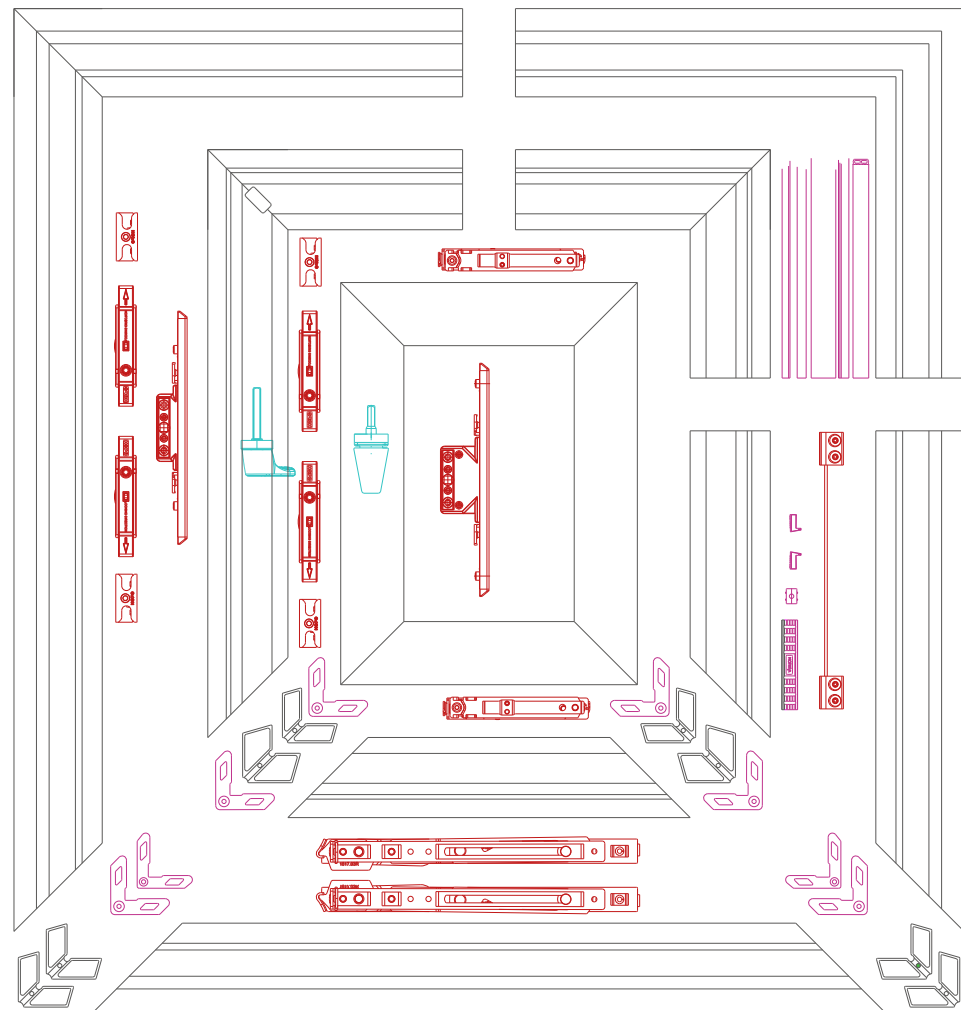






THE BEAUTY OF THE WINDOW STRUCTURE  
MAKES THE QUALITY WITHIN REACH





**VW118** Exploded diagram of Out-opening integrated windows

**STRUCTURE DISPLAY**

Material : Aluminium profile

Insulation strip : Germany imported Technoform insulation strip to reduce heat transfer.

Gasket: European standard foamed composite EPDM sealing strips, enhancing the overall water-tightness and airtightness of the window.

Hardware : glass window and yarn fan fan woodruff lock and other hardware selection HOPO, HOPPE, ROTO and other international famous brands, multi-point lock configuration, smooth opening and closing.

**PERFORMANCE FEATURES**

- ▶ Featuring a hidden dual-channel drainage system and an equal pressure design, this window offers strong water resistance. With a sealed, airtight, and watertight separation structure with a central chamber, it ensures superior airtightness and watertightness, making it resilient in heavy storms
- ▶ Standard inclusion of German-imported TECHNOFORM insulating strips enhances thermal insulation, reduces energy loss, and the triple-seal design effectively reduces noise for a quieter and more comfortable living experience
- ▶ The entire window's corner and mid-rail connections are comprehensively constructed using a system door and window connection adhesive process, enhancing the overall water tightness, wind resistance, and effectively extending the product's lifespan and safety."
- ▶ Optional high-quality LOW-E tempered insulated glass reduces heat radiation, enhances energy efficiency, and ensures excellent soundproofing for a peaceful and comfortable living experience.

# ENERGY-SAVING DOOR AND WINDOW CHARACTERISTICS

- ▶ Energy-Saving Doors and Windows focus on the research and production of residential system doors and windows. Our research and design products are characterized by high water tightness, airtightness, strong wind resistance, high mechanical strength, thermal insulation, soundproofing, security, sun shading, and durability.
- ▶ Based on the concept of energy-efficient system doors and windows, we focus on delivering a perfect system combination. This includes using materials such as thermal break aluminum profiles, LOW-E insulated glass, and high-quality hardware components imported from Germany. By comprehensively evaluating performance and quality at every stage, we achieve superior energy efficiency.
- ▶ We have obtained ISO9001-2015 quality management system certification and occupational health and safety management system certification, and have 67 valid



Excellent Water Tightness



Excellent Soundproofing



High Wind Resistance



Excellent Thermal Insulation



Excellent Air Tightness



QA



**APPLICABLE SCENARIO**

These windows are suitable for balconies, bedrooms, and living rooms in mid-to-high-rise residential buildings





# SPACE SOLUTIONS

## INDOOR

The entry space serves as the boundary between the home and the outside world. Creating a delightful entry space can be achieved by incorporating an entryway window, which invites the outdoors inside, harmonizes the interplay of light and space, allowing natural light to flow freely. With each step into the home, you can enjoy a moment of

## LIVING ROOM

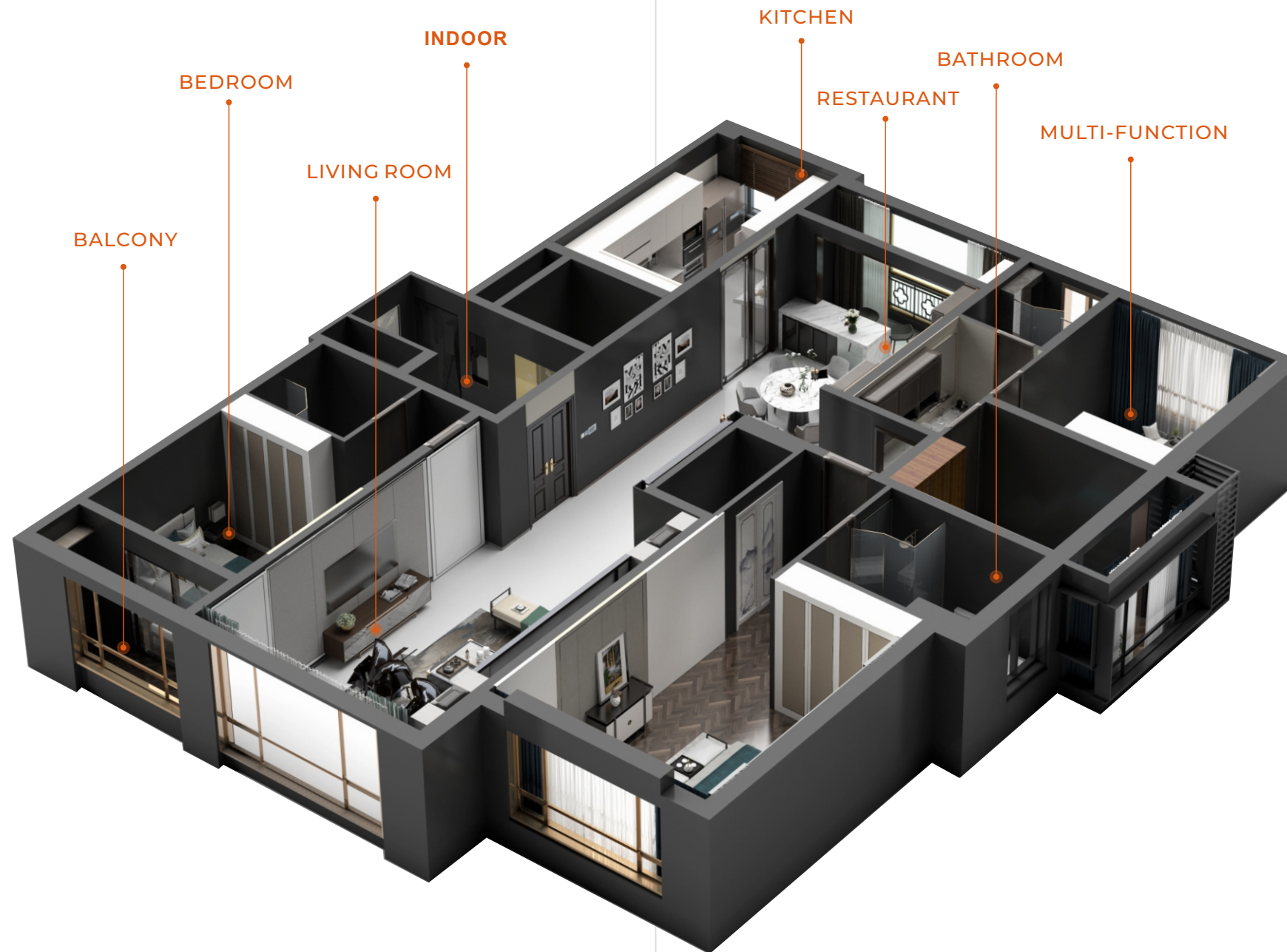
The living room is a space that integrates leisure and entertainment, meeting guests and chatting in one. As the core of the house, it needs to be better presented. The windows and doors of the narrow edge series combine an extremely narrow frame structure with glass. It allows plenty of light to shine into the room and illuminate the space. Its sound insulation performance, water tightness performance, safety performance, etc., truly achieve the coexistence of comfort and appearance.

## BEDROOM

The bedrooms need quiet and comfortable habitats. The doors and windows here will be made of multi-cavity, broken bridge aluminum profile LOW-E insulating glass and multi-channel sealing design. Better isolation of noise and peaceful sleep.

## BALCONY

The balcony is a precious little space for your mind. It is not only an extension of the interior, but also a place to breathe fresh air, dry clothes, and arrange potted plants. Aesthetics and practicality need to be considered. Sliding doors allow light from the balcony to shine better into the interior. It can also make the space expand and expand the radius of happiness. It combines sound insulation, air tightness,



## KITCHEN

Some share twilight moments with you, while others inquire about the warmth of your porridge. In Chinese kitchens, it's the three-foot stove where the essence of daily life unfolds. Whether it's a hinged or sliding door or window, they all provide excellent ventilation, helping to dissipate cooking odors. Thanks to a concealed dual-channel drainage system, they fend off rainwater and offer outstanding airtight performance, while also delivering

## RESTAURANT

The restaurant is a warm space where families can chat and sit around. In this space, enjoy a food hour while enjoying the view from the window. The restaurant is equipped with indoor sliding doors, which can have good sound insulation performance and can effectively reduce noise. It also maintains good air and water tightness even during rainy seasons. It keeps the room at a comfortable and refreshing temperature.

## MULTI-FUNCTION

The charm of multipurpose spaces is that you can do whatever you want. It is designed with multi-functional spaces such as office, leisure, entertainment and storage. More and more people love it. Installing casement windows or sliding windows here can have good daylighting performance. Moreover, it has good effects in terms of air tightness, water tightness and sound insulation. It can also be easily opened, safe and easy to clean in daily life.

## BATHROOM

The bathroom space integrates various functions such as bathing, washing, and toileting, and it must meet ventilation requirements while ensuring privacy. Therefore, it is advisable to choose products with frosted glass, insulated louvers, and good airtightness to strike the right balance."



# CASE REFFERENCE



OPERA HOUSE



GREENLAND CENTER



GARDEN PHASE



VANKE CLOUD PHASE

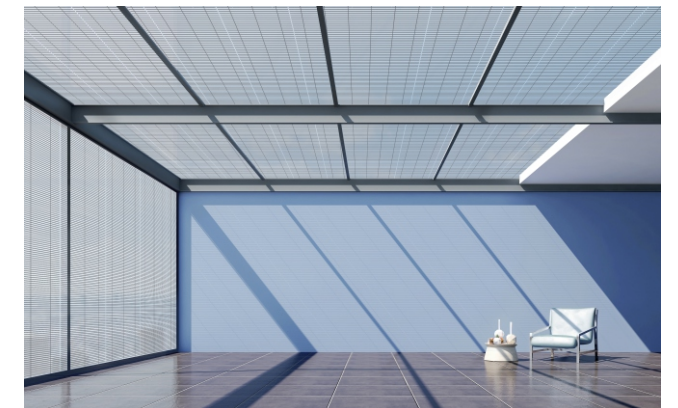
# INNOVATIVE APPLICATION

Energy-saving materials with waterproof, thermal insulation, energy saving and environmental friendly features, and has the production and application capability to apply such materials to the doors and windows systems, so that the door and window products can achieve better energy-saving effects.



Application of photovoltaic materials in system energy-saving doors and windows

Photovoltaic window refers to a window system constructed using double-layered glass encapsulating semi-transparent photovoltaic components in place of traditional glass. In photovoltaic windows, the non-transparent (or semi-transparent) solar cell section generates electricity through the photovoltaic effect, while the transparent (or semi-transparent) section allows for natural lighting and visual communication



Application of new materials in system energy saving doors and windows

subject to high-temperature and high-pressure bonding in a autoclave or laminating furnace to produce a new type of special electro-optical glass product..











WINDOW SYSTEM

- VN75B inside open and back window
- VN78B inside open and back window
- VN83B inside open and back window
- VN95B double inside open and back window
- VW100C out-opening integrated window
- VW110 out-opening integrated window

- VW118B integrated window
- VW120 out-opening integrated window
- VN125B inside open and back integrated window
- VW126B out-opening integrated window
- VLT130 non-thermal break sliding window



## VN75B WINDOW

**VN75B** inside open and back window

The window frame is flush with the sash. Simple and elegant.

Open the window, the breeze blows in, the sun shines, and experience the good life

- ▶ Window style in which the sash is aligned with the window frame / Dual-channel hidden drainage
- ▶ structure
- ▶ European standard foamed composite EPDM sealing strip / Glue injection process at the connection of

Main Wall thickness (mm)	Frame width (mm)	Minimum wall thickness (mm)	
		No edge guarding	Unilateral edge guards
1.6	74	95	110



Excellent Water  
Tightness



Excellent  
Soundproofing



High  
Wind Resistance



Excellent  
Thermal Insulation



Excellent Air  
Tightness





## VN78B WINDOW

**VN78B** Inner opening and inner inverted window

Brand-new high-quality heat insulation design, cool in summer, warm in winter, let the enemies of cool and warm reconcile on one window.

- ▶ Standard notch design of European standard C groove/high performance internal opening and internal inverted
- ▶ window/glue injection process;
- ▶ German Tylenol 39mm finned heat insulation strip/European standard foamed composite EPDM sealing strip; The glass notch comes standard with thermal insulation, flame retardant and thermal insulation cotton /ROTO
- ▶ transmission hardware +HOPPE handle;

Standard 5+12Ar+5+12Ar+5mm high-quality Low-e tempered double hollow transparent glass.

Main Wall thickness (mm)	Frame width (mm)	Minimum wall thickness (mm)
1.8	78	100



## VN83B WINDOW

**VN83B** Inner opening and inner inverted window

Design a window in a busy city, Incorporate the breeze, get a glimpse of nature, and integrate the light and shadow flow and the beautiful scenery of the four seasons into home life.



- ▶ High-performance internal opening and internal inverted window/adopting European standard C groove standard notch design;
- ▶ Frame fan profile insulation cavity and glass notch come standard with flame retardant insulation cotton/ excellent heat insulation and sealing performance;
- ▶ Standard 5+15Ar+5+15Ar+5mm high-quality Low-e tempered double hollow transparent glass.

Main Wall thickness (mm)	Frame width (mm)	Minimum wall thickness (mm)
1.8	83	105







# VW100C WINDOW

**VW100C** Externally opened integrated window

Exquisite sound insulation, comfortable and warm, It is not only a picture frame of nature, but also a guardian with super performance.

- ▶ The flush design/narrow-edge board style of the whole exterior frame fan;
- ▶ Standard off-quality insulation strip and HOPO hardware system/can be equipped with imported VBH handle;
- ▶ 5+20A+5mm toughened hollow Borui/concealed drainage structure/glue injection technology for the

Main Wall thickness (mm)	Frame width (mm)	Minimum wall thickness (mm)	
		No edge guarding	Unilateral edge guards
1.6	100	120	135



# VN95B WINDOW

**VN95B** Double inner opening and inner inverted window

When closed, there is no air leakage, when opened, there is no rain leakage, and when opened, it falls down. Both ventilation and anti-theft, silently guarding a comfortable life.

- ▶ The appearance of the whole window is the flush design of frame and fan/hidden drainage structure/equal pressure design principle;
- ▶ The corner assembly and middle stile connection of the whole window adopt pin connection glue injection process/European standard foaming compound EPDM sealing strip;

Main Wall thickness (mm)	Frame width (mm)	Minimum wall thickness (mm)	
		No edge guarding	Unilateral edge guards
1.6	95.2	115	130





# VW110 WINDOW

**Vw110** Externally opened integrated window

The bright stars outside the window, the warm scenery inside the room, and the infinite comfort of the extension, originated from love.

- ▶ Full-body 2.0 wall thickness/multi-cavity profile structure/appearance frame fan flush design/flush bias line design;
- ▶ Double-channel concealed drainage structure design/high-quality EPDM sealing tape/special customized hardware system;
- ▶ 5+19A+5mm tempered insulating glass/high-quality heat insulation

Main Wall thickness (mm)	Frame width (mm)	Minimum wall thickness (mm)	
		No edge guarding	Unilateral edge guards
2.0	110	130	145

-  High Wind Resistance
-  Excellent Thermal Insulation
-  Excellent Air Tightness
-  Excellent Water Tightness
-  Excellent Soundproofing







## V118B WINDOW

**VN118B** Inner opening and inner inverted integrated window

**VW118B** external integrated window

The bright stars outside the window, the warm scenery inside the room, and the infinite comfort of the extension, originated from love.

- ▶ The appearance of the whole window is the flush design of no frame and fan/hidden drainage structure;
- ▶ The corner assembly and mid-tappet connection of the whole window adopt spin connection glue injection process/PET high-permeability mesh can be selected for gauze;
- ▶ EPDM sealing tape/standard child lock hidden handle/optional HanShi magnetic

Main Wall thickness (mm)	Frame width (mm)	Minimum wall thickness (mm)	
		No edge guarding	Unilateral edge guards
1.6	118	140	155



High Wind Resistance

Excellent Thermal Insulation

Excellent Air Tightness

Excellent Water Tightness

Excellent Soundproofing





# VN125B WINDOW

**VN125B** Integral window with internal opening and internal inversion

The integrated window reduces the dullness and closure of the space, and penetrates the scene of the bustling city into the room like a projector.

- ▶ Good lighting and excellent sight sublimate the sense of high class of the house. The whole window
- ▶ appearance frame fan is flush design/hidden lower drainage/double-channel drainage
- ▶ structure;  
German HOPPE handle or German VBH handle without base can be selected;

Main Wall thickness (mm)	Frame width (mm)	Minimum wall thickness (mm)	
		No edge guarding	Unilateral edge guards
1.8	125	145	160

				
High Wind Resistance	Excellent Thermal Insulation	Excellent Air Tightness	Excellent Water Tightness	Excellent Soundproofing

# VW120 WINDOW

**Vw120** Externally opened integrated window

Sound insulation and noise reduction, into the breeze.  
For love, for home, guarding the sunshine and comfortable home.

- ▶ Customized hardware of the system/optional imported HOPPE VBH ROTO SAVIO/flush design of exterior frame and fan;
- ▶ Fixed oblique pressure line design/double channel concealed drainage
- ▶ structure design/high quality EPDM sealing tape;
- ▶ 5+27A+5mm tempered large hollow glass design/high quality heat insulation strip.

Main Wall thickness (mm)	Frame width (mm)	Minimum wall thickness (mm)	
		No edge guarding	Unilateral edge guards
2.0	120	140	155

				
High Wind Resistance	Excellent Thermal Insulation	Excellent Air Tightness	Excellent Water Tightness	Excellent Soundproofing







# VW126B WINDOW

**VW126B** Externally opened integrated window

Simple in form, to the heart,  
The flush design of the whole window frame fan gives a large view of the frame charm and presents a sense of advanced modernity

- ▶ The appearance of the whole window is flush with the sash/comes standard with the German Tyleneol wind insulation strip;
- ▶ Double-channel concealed drainage/European standard foaming compound EPDM sealing strip/open position three-layer sealing structure design;
- ▶ 5+27A+5mm tempered insulating glass/Han Shi electric and light energy electric louver glass can be selected.

Main Wall thickness (mm)	Frame width (mm)	Minimum wall thickness (mm)	
		No edge guarding	Unilateral edge guards
1.8	126	150	160



High Wind Resistance



Excellent Thermal Insulation



Excellent Air Tightness



Excellent Water Tightness



Excellent Soundproofing





# VLT130B WINDOW

**VLT130B** non-broken bridge sliding window

More and more people advocate the attitude of "fewer but better". Minimalist sliding windows also came into being, creating a simple and comfortable Nordic home aesthetics.

- ▶ Minimalist appearance style/standard Paige two-point lock hardware system/high quality silicified top seal;
- ▶ Butyl rubber pad is used for waterproof treatment/drop drainage structure design at the connection part of the frame;

5+15A+5mm tempered insulating glass/standard 304 stainless steel diamond mesh.

Main Wall thickness (mm)	Frame width (mm)	Minimum wall thickness of the two rail (mm)		Minimum wall thickness of three rails (mm)	
		Without a cover	Single package	Without a cover	Single package
1.4	87/130	110	120	150	165

-  High Wind Resistance
-  Excellent Thermal Insulation
-  Excellent Air Tightness
-  Excellent Water Tightness
-  Excellent Soundproofing



## DOOR SYSTEM

VTT100 extremely narrow sliding door

VTT110 extremely narrow sliding door

VTT120 sliding door

VPT35 flat door

VPT35 extremely narrow flat door

VPT40 extremely narrow flat door

VP70 Broken Bridge Flat door

VP120 broken bridge opens the integrated door horizontally

VS120A Broken Bridge Sliding door

VS120B broken bridge lifting sliding door

VZT77 folding door



# VTT100 DOOR

**VTT100** Extremely narrow sliding door

Smooth and bright narrow edge design, simple and delicate, Let the space be dense and consistent, and give the space a graceful sense of hierarchy.

- ▶ Adopt extremely narrow frame design/can be used as sliding door, hanging door and linkage door;
- ▶ The product supports 90 borderless corner door structure/aluminum alloy minimalist style handle with the same color as the profile as standard;
- ▶ 8mm high-quality tempered white glass is standard/artistic glass styles such as frosted glass, laminated plastic, laminated silk and Changhong with the same thickness can be selected.

Main wall thickness (mm)	frame width (mm)			
	Single track	Two tracks	Three tracks	Four tracks (hanging trip)
Frame1.2 / Fan2.4-3.0	48.4	95.6	142.7	191.1

Minimum wall thickness (mm)					
Two-track single package	Two-track double package	Three-track single package	Three-track double package	Four-track single package	Four-track double package
120	102	160	150	210	200



# VTT110 DOOR

**VTT110** Extremely narrow sliding door

Extremely narrow aesthetics, simple rhyme, trying to find artistic creation in a prosperous city, so VTT110, an extremely narrow sliding door, was born.

- ▶ Minimalism/indoor sliding door/minimalist handle with the same color as the profile as standard;
- ▶ Support the structural design of 90 borderless corner door/optional damping;
- ▶ Standard 8mm high-quality tempered white glass/stainless steel lower pulley assembly/can be used as a

Main wall thickness (mm)	frame width (mm)		
	Single track	Two tracks	Three tracks
Frame1.2 / Fan2.4-3.0	53.5	105.3	157.2

Minimum wall thickness (mm)			
Two-track single package	Two-track double package	Three-track single package	Three-track double package
130	115	180	165





# VTT120 DOOR

## VTT120 Sliding door

Exquisite and capable design depicts the sense of modern minimalism, and the super-ingenious structural configuration presents a high-quality attitude.

- ▶ Simple appearance/can meet the functional requirements of two-track push-pull and three-track yarn;
- ▶ The hook enterprise comes standard with decorative cover plate and anti-collision block/frame as standard with composite foamed EPDM rubber strip;
- ▶ Standard 304 stainless steel silent lower pulley, upper anti-swing wheel and lower rail/load-bearing stable anti-swing/silent operation and smooth push and pull.

Main Wall thickness (mm)	Frame width (mm)	Minimum wall thickness of the two rail (mm)		Minimum wall thickness of three rails (mm)	
		No package	Single/double package	No package	Single/double package
1.6	121/182	140	130	200	190



High  
Wind Resistance



Excellent  
Thermal Insulation



Excellent Air  
Tightness



Excellent Water  
Tightness



Excellent  
Soundproofing





# VPT35 DOOR

**VPT35** Ultra-narrow Swing Door

Balancing trade-offs, simplifying amidst complexity, and crafting with a refined golden ratio to achieve an exquisite aesthetic with ultra-narrow frames delineating intricate lines

- ▶ Ultra-slim minimal edge design, golden ratio, EPDM (Ethylene Propylene Diene Monomer) composite rubber strips on the door frame, and smooth dampening
- ▶ Standard soft rubber door stopper, noise reduction and anti-collision features, and can be used as both inward and outward swing doors, as well as double doors
- ▶ Standard 8mm single-sided frosted tempered glass, with optional choices of the same thickness laminated, Long Hong, and other artistic glass styles

Wall thickness (mm)	Frame thickness (mm)	Fan width (mm)	Fan thickness (mm)	Minimum wall thickness of the two rail (mm)	
				Single wrap	Double wrap
Frame 1.1 / Fan 2.4-3.0	60/77.4	18	35	75	60

# VPT35 DOOR

**VPT35** Ultra-narrow Swing Door

Balancing trade-offs, simplifying amidst complexity, and crafting with a refined golden ratio to achieve an exquisite aesthetic with ultra-narrow frames delineating intricate lines

- ▶ The exterior design is simple and stylish, and it can be used as both an outward swing door and an inward swing door
- ▶ The door frame uses EPDM (Ethylene Propylene Diene Monomer) composite rubber strips for waterproof sealing and noise reduction
- ▶ High-quality metal brushed finish, double-sided door handle with lock, silent lock core, and adjustable lock seat

Wall thickness (mm)	Frame thickness (mm)	Sash width (mm)	Sash thickness (mm)	Minimum wall thickness of the two rail (mm)	
				Single wrap	Double wrap
Frame 1.1	65/72.7	55	35	70	60







# VP70 DOOR

**VP70** Thermal Break Swing Door

Quality safeguards urban living, continuously upgrading sealing and injection molding processes, effectively preventing water ingress and ensuring peace of mind for your home.

- ▶ Thermal break insulation design with high-quality PA66GF25 thermal insulation strips
- ▶ Standard equipped with HEMIK brand hardware, available for both inward and outward swing.

Wall thickness (mm)	Frame thickness (mm)	Wall thickness (mm)
2.2	68.4	90

				
High Wind Resistance	Excellent Thermal Insulation	Excellent Air Tightness	Excellent Water Tightness	Excellent Soundproofing



# VPT40 DOOR

**VPT40** Ultra-narrow Swing Door

Having a good door is like having a cozy haven on one side and a changing garden on the other. Freedom, found in the opening and closing

- ▶ Minimalist ultra-narrow edge design style with PU-coated sealing strips on the door frame
- ▶ Magnetic-suction silent lock core, high-quality custom stainless steel hinges, smooth and easy operation
- ▶ Standard 8mm single-sided frosted tempered glass, with optional choices of the same thickness

Wall thickness (mm)	Frame thickness (mm)	Sash width (mm)	Sash thickness (mm)	Minimum wall thickness of the two rail (mm)	
				Single wrap	Double wrap
Frame 1.1 / Fan 2.4-3.0	65/79.9	18	40	75	65





# VP120 DOOR

**VP120** Integrated Thermal Break Swing Door

Satisfying daily household functionality while displaying meticulous craftsmanship and artistic flair. Each step reveals a private realm of swing door elegance.

- ▶ Thermal break structure design, swing doors for both indoor and outdoor use, standard equipped with HEMIK brand hardware.
- ▶ Standard high-quality EPDM glass sealing strips, composite foam EPDM sealing strips

5+20A+5mm tempered insulated glass, windows connected with screw corner

Wall thickness (mm)	Frame thickness (mm)	Min. Wall thickness (mm)
1.4	119	140

-  High Wind Resistance
-  Excellent Thermal Insulation
-  Excellent Air Tightness
-  Excellent Water Tightness
-  Excellent Soundproofing



# VS120A DOOR

## VS120A Thermal Break Sliding Door

"At this moment, silence prevails over sound, and quality is felt in the details. With a soundproof and thermal break sliding design, it creates a tranquil and peaceful home environment.

- ▶ High-quality PA66GF25 thermal insulation strips, delivering excellent thermal insulation performance.
- ▶ The bottom rail comes standard with U-shaped plastic thermal insulation auxiliary strips, and both top and bottom rails are equipped with windproof blocks for efficient sealing.
- ▶ The upper and lower rails are equipped with 304 stainless steel tracks, and the sliding panels come with

Wall thickness (mm)	Frame thickness(mm) (Two-track/Three-track)	Two-track Min. Wall thickness		Three-track Min. Wall thickness	
		Without wrap	Single/Double wrap	Without wrap	Single/Double wrap
Frame 1.8 /Sash2.5	117/182	135	125	200	190



# VS120B DOOR

## VS120B Thermal Break Sliding Door

Superior design strikes a delicate balance between comfort and luxury, practicality and idealism. Exceptional doors and windows seamlessly fuse light and scenery, quality and elegance.

- ▶ Featuring a thermal break structure design, offering options of both two-track and three-track frames with screens. The hardware system for lift and slide doors is sourced from Germany's GU.
- ▶ Standard inclusion of high-quality EPDM sealing strips and composite foam EPDM glass sealing strips, with door leaf assembly secured by corner screws.
- ▶ The glass is 5+20A+5mm tempered insulated, with a single leaf capable of bearing up to 250Kg,

Wall thickness (mm)	Frame thickness(mm) (Two-track/Three-track)	Two-track Min. Wall thickness		Three-track Min. Wall thickness	
		Without wrap	Single/Double wrap	Without wrap	Single/Double wrap
Frame 1.8 /Sash2.5	117/182	135	125	200	190





# VZT77 DOOR

## VZT77 Folding Door

Between folds, it connects indoor and outdoor spaces, and within limited space, it exudes a luxurious and high-end appearance.

- ▶ Designed with concealed hinge structure, it can accommodate multiple folding methods
- ▶ Standard equipped with Kaisenberger folding door hardware system, with pulleys featuring positioning and anti-derailment functions
- ▶ 5+15A+5mm tempered insulated glass and anti-pinch door leaf

Wall thickness (mm)	Frame thickness (mm)	Min. Wall thickness	
		Without wrap	Single/Double wrap
Frame 1.5/Sash 1.5	77	95	85







WINTERGARTEN SYSTEM

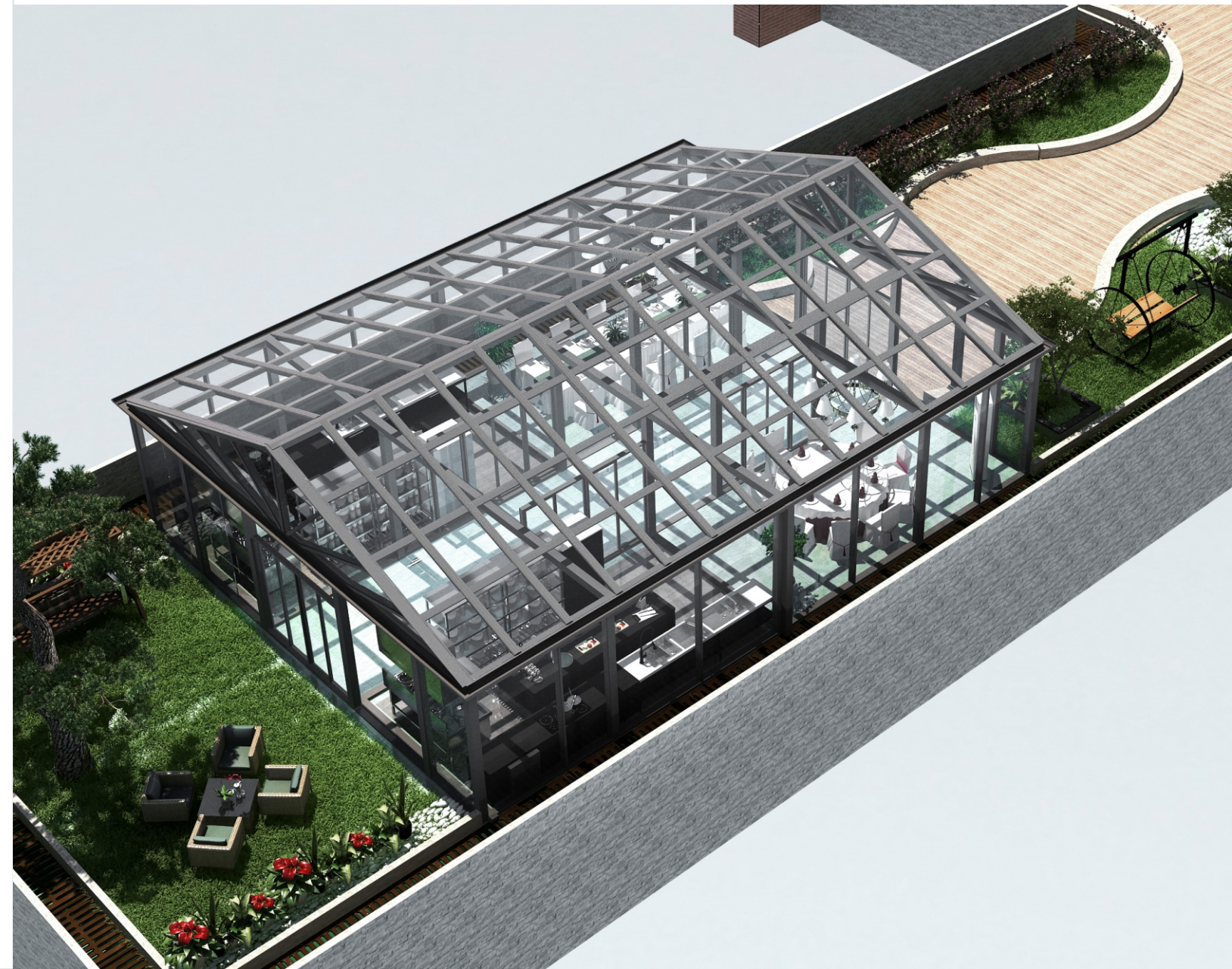
# VYT120 WINTERGARTEN

## VYT120 Sunroom

Built on a foundation of simplicity, it emphasizes a distinctive spatial perspective and fosters modern aesthetics. The extensive floor-to-ceiling window design creates an open and airy space, allowing the outdoor scenery to be fully embraced.

- ▶ Featuring a non-thermal break structure design, it can accommodate various forms of structures, including flat roofs, sloping roofs, and hipped roofs.
- ▶ Optional manual or electric skylights, with the option of skylight screens featuring 304 stainless steel mesh.

Main Beam Thickness (mm)	Column thickness (mm)	Secondary Beam Thickness (mm)	Column Section Dimensions (mm)	Main Beam Section Dimensions (mm)
3	3	3	125x125	120x60







VYT120 WINTERGARTEN **VYT120** Sunroom





#### INSTRUCTIONS

- ▶ The catalog should be used in conjunction with the "Sales Technical Manual" and the "Product Price Manual."
- ▶ Due to potential variations in printing, all rendered images in this catalog are for reference only. Actual product colors and materials should be verified with physical samples
- ▶ Some door and window products may offer choices in surface colors and hardware configurations. The specific options are detailed in the "Sales Technical Manual"
- ▶ During the usage period of this product catalog, updates or discontinuations of products or components will not be reflected here. Please pay attention to notifications from headquarters regarding additions or discontinuations of products or components, and place orders accordingly
- ▶ Copyright Notice: All product design images in this catalog are protected by copyright and may not be used for commercial purposes, reproduced, or excerpted without permission.